

ProPlan

Project Services

COMPANY INTRODUCTION



• ProPlan LLC	3
• Integrated Services	4
• Project Controls	5
• Commissioning	15
• References	19
• Conclusion	23
• Contact	24



Consultant company +15 years track record in the management and control of projects and organizations

- Specific Project Management services focusing on Integration and Collaboration

+10 Clients in Oil & Gas (Onshore and Offshore) and Shipbuilding Industry worldwide

- Italy, Russia, Kazakhstan, Poland, Venezuela, Croatia, Egypt, Czech Republic, Lybia, Qatar, Nigeria, Brunei, UK

HQ based in Rijeka, Croatia

- branch in Ravenna, Italy
- branch in Aktau, Kazakhstan
- partially controlled consultant company Lleeza Ltd. in London, UK



Our team

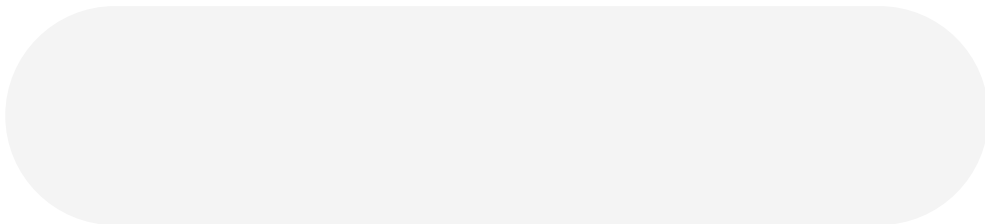
- +25 engineers
 - Mechanical Engineers
 - Electrical, Instrumentation and Telecom Engineers
 - Planning Engineers
 - Naval Architects
- MBA
- 80% of employees hold a B.Sc. in Engineering
- Multilingual skills
- Worldwide mobility



Experience in

- Oil & Gas Industry (Onshore Platforms Construction, Refineries, Offshore Revamping, Offshore Hook Up and Commissioning)
- Shipbuilding Industry
- Ship engine Manufacturing
- Wind mills Installation
- Ship Management
- Management and Strategy Consultancy

Carefully selected professionals with excellent personal characteristics as well as professional knowledge





We provide integrated Project Planning and Commissioning

Project Controls

- Planning
- Cost Control
- Analysis

Commissioning

- Commissioning Engineering
 - Commissioning Procedures and DWG
 - Engineering Follow Up
- Onsite Commissioning (including MC / PRECOMM / COMM)
 - Onsite Management
 - Onsite Supervision
 - Onsite Certification

We can provide services of project planning and control from the initiation to the end

- Planning
- Monitoring
- Reporting
- Analysis

You can outsource any of the following positions

- Contract Manager
- Project Control Managers
- Planner (Senior & Junior)
- Schedulers
- Cost Control Engineers
- Quantity Surveyors (Progress Controllers)



Software expertise

- Primavera P6
- MS Project
- MILEMATE!
- MS Office Applications
- Autocad



From tendering and engineering phase to start up we are taking care of

Project Level

- Critical Path Method (CPM) Scheduling
- Integrated Baseline Reviews (IBR)
- Schedule Health Checks
- Monitoring Methods Definition
- Reporting Preparation
- Trend Analysis
- Performance Index (KPI) Preparation and Maintenance
- Periodical Schedule Audits

Enterprise Level

- Planning Enterprise Environment Set Up and Maintenance
- Overall Company Workload Analysis
- Management Reporting
- Planning Coordination
- Training

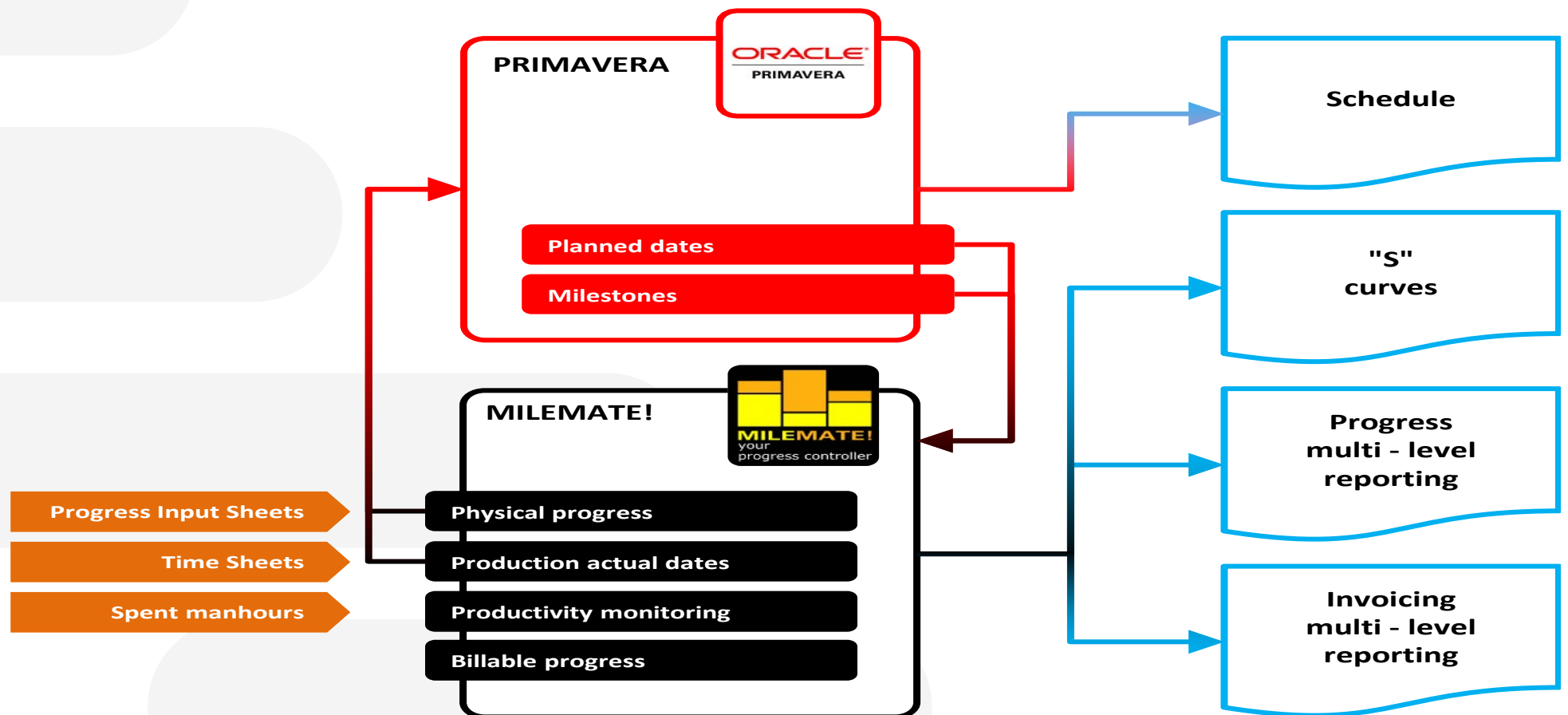


We believe in Project team collaborative approach for strategy definition

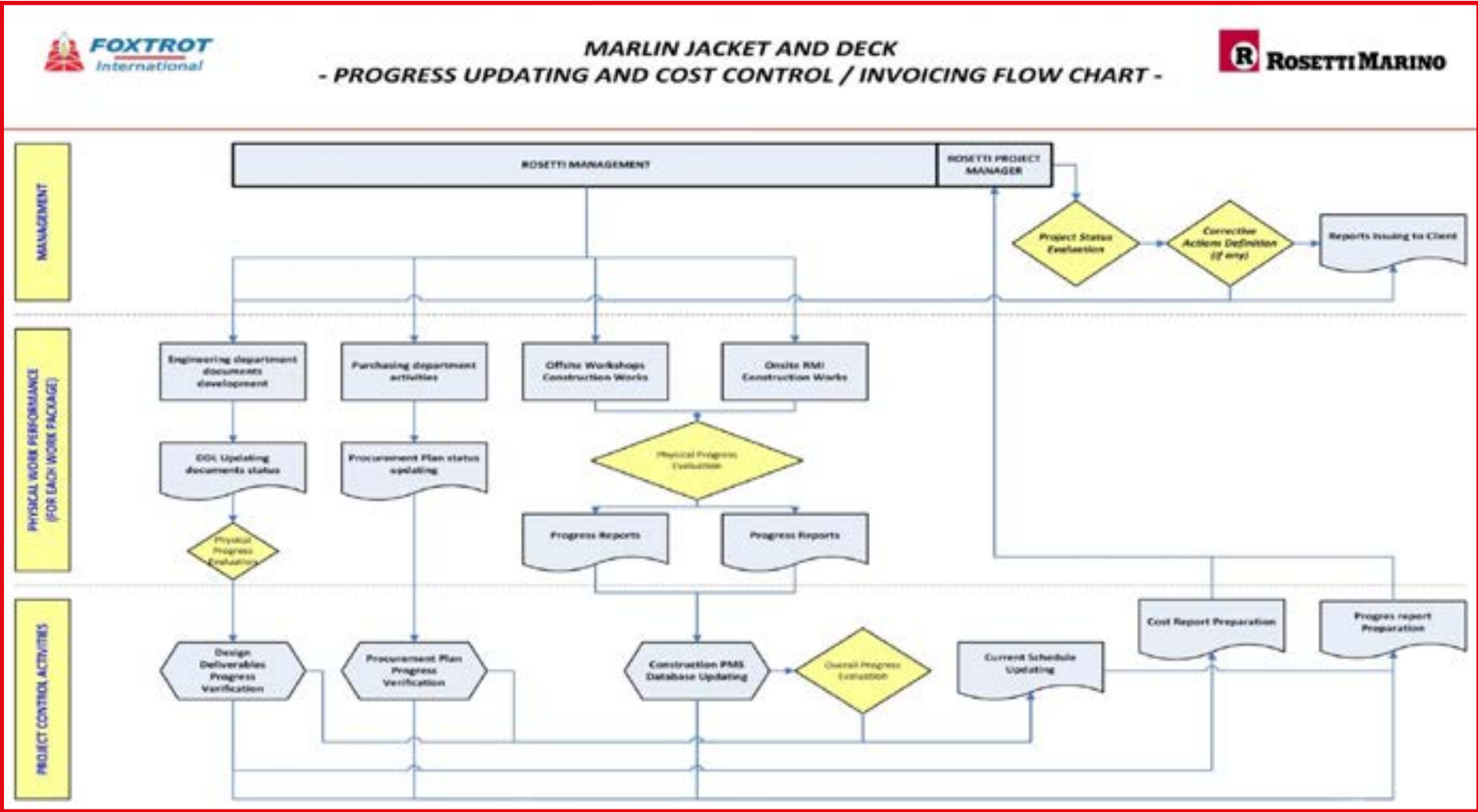
- Management early engagement
- Engineering strategy
- Procurement
- Construction strategy (erection sequence)
- Mechanical Completion / Precommissioning / Commissioning strategy



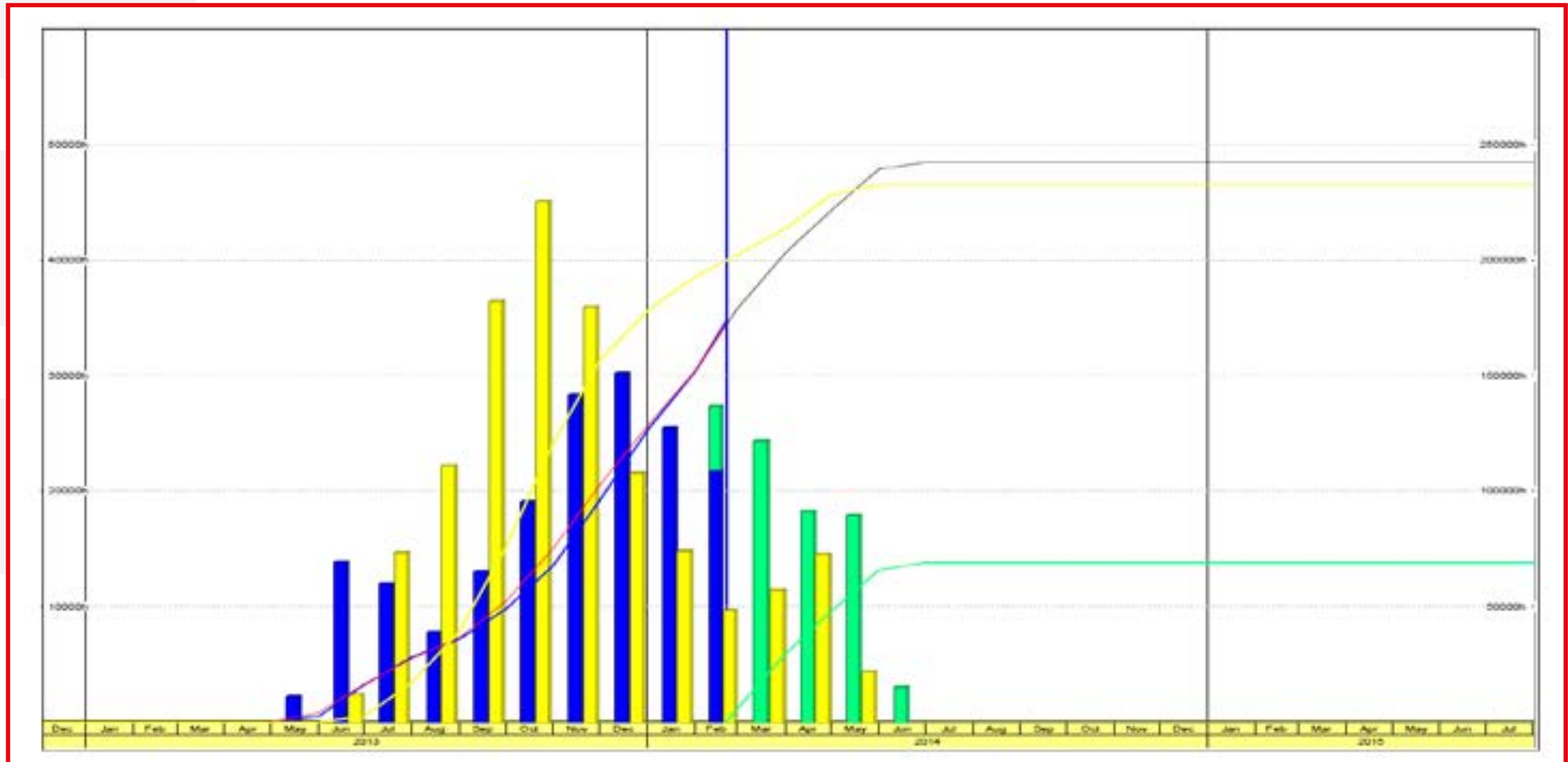
Project Controls Strategy - Systems integration diagram (example)



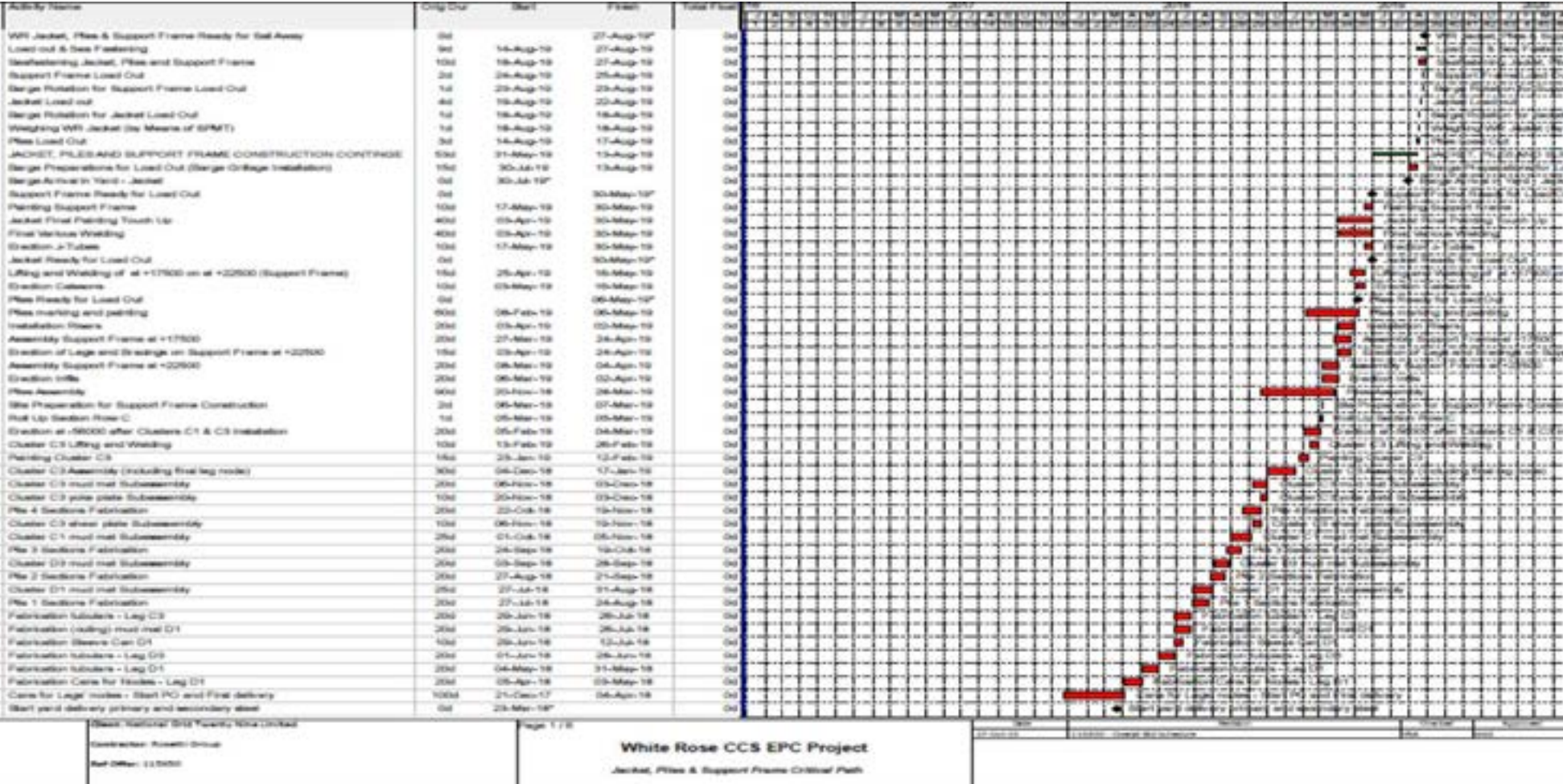
Project Controls Strategy - Project controls flow diagram (example)



Schedule man-hours assignment and monitoring (example)



Project Controls Strategy - Critical Path Analysis - Tornado view (example)





We provide a complete service

- Starting with commissioning procedures
- Through onsite mechanical completion / precommissioning
- Round it up with commissioning and start up assistance

We manage onsite activities from mechanical completion to the signature of a satisfied client

- Commissioning Project Schedule
- Site / project safety procedures
- Management & Supervision
- Detailed reports (Skylines, S-Curves, KPIs)
- Analysis (Internal databases, ICAPS, WIN PCS, MILEMATE!, SPITCH)
- Certification Follow Up



We provide commissioning services for all project disciplines

- Mechanical
- Instrumentation
- Electrical
- Telecommunication

You can outsource any of the following positions

- Engineers
- Managers
- Superintendents
- Supervisors
- Technicians



Performing jobs required to reach the target

- Commissioning engineering (procedures and drawings)
- Commissioning planning
- Inspection and testing
- Diagnose systems / Equipment malfunctioning
- Monitoring the activities
- Work and coordination with vendors representatives
- Reporting / Planning / Preparation and accomplishment of required documents



- Problems are part of the work
- We are capable of forecasting and solving them
- Reach the target resolving the critical points by being flexible but maintaining the focus
- Solving engineering problems during pre-commissioning activities
- Troubleshoot the systems
- Prepare and accomplish the required/missing documentation
- Think in advance, plan
- Forecast the upcoming problems
- Take action to solve the potential issues
- Start the job in time
- Learn

References (last 8 years)



PROJECT LEVEL - OIL & GAS				
YEAR	PROJECT	OUR CLIENT	END CLIENT	SERVICE DESCRIPTION
2018 - Ongoing	Urinj Refinery Revamping	KT	INA	Planning, Reporting, Progress Monitoring and Analysis for all Phases of work
2018	EFRA Poland	KT / Sisco	Lotos	Commissioning Management Service
2018 - Ongoing	RGI Island D Upgrade	KCOI	NCOC	Planning, Reporting, Progress Monitoring and Analysis for all Phases of work
2018	Tolmount EPC	Rosetti	Premier Oil UK	Planning, Reporting, Progress Monitoring and Analysis for all Phases of work
2018	Marghera Refinery Revamping	Rosetti	ENI	Planning, Reporting, Progress Monitoring and Analysis for all Phases of work
2017 - 2018	Sabratha Platform Revamping	Rosetti	Melitah	Planning, Reporting, Progress Monitoring and Analysis for all Phases of work
2017 - 2018	Bahr Essalam Pipeline Spools Fabrication	Rosetti	Melitah	Planning, Reporting, Progress Monitoring and Analysis for Construction Phase
2017 - Ongoing	YAMAL Project	TOZZI EAST	Technip	Commissioning Management Service
2017 - 2018	ZOHR	Rosetti	Petrojet / Schlumberger	Commissioning Management Service
2017 - Ongoing	NFB OFFSHORE ACCOMMODATION	Rosetti	QATARGAS	Planning, Reporting, Progress Monitoring and Analysis for Hook Up Phase
2017 - Ongoing	EPC 4	KCOI	NCOC	Planning, Reporting, Progress Monitoring and Analysis for Hook Up Phase
				Commissioning Management Service
2017 - 2018	TCO Grid LERs - Substation 51	Rosetti	GE / TCO	Planning, Reporting, Progress Monitoring and Analysis for Hook Up Phase
				Commissioning Management Service
2017 - Ongoing	Litvinov Refinery Revamping	O.M.A.	Technip	Planning, Reporting, Progress Monitoring and Analysis for all Phases of work
2016 - 2017	EPC 3	KCOI	NCOC	Planning, Reporting, Progress Monitoring and Analysis for Hook Up Phase
				Commissioning Management Service
2016 - 2018	TCO Grid LERs - Main	Rosetti	GE / TCO	Planning, Reporting, Progress Monitoring and Analysis for all Phases of work
2016	TAP Project	Renco	TAP	Planning, Reporting, Progress Monitoring and Analysis for Construction Phase
2016	Kashagan Pig Traps	KCOI	NCOC	Planning, Reporting, Progress Monitoring and Analysis for Hook Up Phase
				Commissioning Management Service
2016 - 2017	NAQ PIII	Rosetti Marino	Petrojet	Commissioning Management Service
2016	Berakas Power Station	RAM Power	General Electric	Planning, Reporting, Progress Monitoring and Analysis for Construction Phase

References (last 8 years)

PROJECT LEVEL - OIL & GAS				
YEAR	PROJECT	OUR CLIENT	END CLIENT	SERVICE DESCRIPTION
2016 - 2017	South Stream project	O.M.A.	Juzni Tok / Gazprom	Planning, Reporting, Progress Monitoring and Analysis for Hook Up Phase
2015 - 2016	Perla EP Gulf of Venezuela	Rosetti Marino	ISS / Cardon IV	Planning, Reporting, Progress Monitoring and Analysis for Hook Up Phase
				Commissioning Management Service
2015 - 2016	DP4 Interface Works	Rosetti Marino	Melitah	Planning, Reporting, Progress Monitoring and Analysis for all Phases of work
2014 - 2016	TCO Grid LERs - Core	Rosetti / SKEMA	Alstom / TCO	Planning, Reporting, Progress Monitoring and Analysis for all Phases of work
2014 - 2018	Petrobaltic Rig to FSO Conversion	Rosetti Marino	Lotos	Planning, Reporting, Progress Monitoring and Analysis for all Phases of work
				Mechanical Completion Management Service
2014	West Franklin & Elgin B Hook Up	Rosetti UK	Total UK	Planning, Reporting, Progress Monitoring and Analysis for all Phases of work
2013 - 2014	Marlin Platform	Rosetti Marino	Foxtrot	Project Control Management (incl planning, active and passive cost control, reporting, contract administration)
2013 - 2014	Elettra Topside	Rosetti Marino	ENI	Planning, Reporting, Progress Monitoring and Analysis for all Phases of work
				Commissioning Management Service
2013 - 2014	Fauzia Topside	Rosetti Marino	ENI	Planning, Reporting, Progress Monitoring and Analysis for all Phases of work
				Commissioning Management Service
2012 - 2013	Clipper Living Quarter	Rosetti Marino	Shell	Project Control Management (incl planning, active and passive cost control, reporting, contract administration)
2012 - 2013	DP3 / DP4	Rosetti Marino	Melitah	Planning, Reporting, Progress Monitoring and Analysis for all Phases of work
2012 - 2014	IKA JZ / Ilena	Rosetti Marino	INAgip	Planning, Reporting, Progress Monitoring and Analysis for all Phases of work
2011 - 2012	Kashagan E/I Hook Up	Proeco	Agip KCO	Commissioning Management Service
		KCOI	Agip KCO	Planning, Reporting, Progress Monitoring and Analysis for all Phases of work

References (last 8 years)



PROJECT LEVEL - SHIPBUILDING				
YEAR	PROJECT	OUR CLIENT	END CLIENT	SERVICE DESCRIPTION
2018 - Ongoing	QUARK Polar Cruiser	Brodosplit	Quark Expeditions	Full Management Service
2016 - Ongoing	Flying Clipper	Brodosplit	Star Clippers	Planning, Reporting, Progress Monitoring and Analysis for all Phases of work
				Commissioning Management Service
2015	USS M. Whitney	Viktor Lenac	US Navy	Planning, Reporting, Progress Monitoring and Analysis for all Phases of work
2014 - 2015	Cable Enterprise	Viktor Lenac	Prismian	Planning, Reporting, Progress Monitoring and Analysis for all Phases of work
2011 - 2012	Pipelay Vessel "Sampson" - Stinger	Viktor Lenac	Zafiro Marine	Planning, Reporting, Progress Monitoring and Analysis for all Phases of work
2011 - 2012	Pipelay Vessel "Sampson"	Viktor Lenac	Zafiro Marine	Planning, Reporting, Progress Monitoring and Analysis for all Phases of work

ENTERPRISE LEVEL				
YEAR	PROJECT	OUR CLIENT	END CLIENT	SERVICE DESCRIPTION
2018 - ongoing	Tender Planning	Basis Engineering	Basis Engineering	Preparation of schedules and supporting project control documentation of Bids
2018 - ongoing	Project Control Management / Planning Coordination	Brodosplit d.d.	Brodosplit d.d.	Set Up of Project Control Enterprise Environment in P6, preparation of procedures, personell training, Top Management reporting
2011 - 2015	Projec Control Management / Planning Coordination	Rosetti Marino	Rosetti Marino	Set Up of Project Control Enterprise Environment in P6, preparation of procedures, personell training, Top Management reporting
2010 - ongoing	Tender Planning	Rosetti Marino	Rosetti Marino	Preparation of schedules and supporting project control documentation of Bids

References (last 8 years)



We offer to you

- One point of contact for integrated Project controls and Commissioning services
- Outsourcing professionals to strengthen your existing projects

We believe

- The only thing that is constant is change
- Changing things is not bad if the change is managed

“To improve is to change; to be perfect is to change often.”

Winston Churchill





ProPlan LLC

- Headquarters

Trg 128. brigade HV 4
51000 Rijeka - Croatia
T +385 51 323 393

- Branch office Italy

Via Pirano 9
48122 Ravenna - Italy
M +39 345 927 03 62

- Branch office Kazakhstan

B/C Grand Nur Plaza
Aktau, 29A md. - Kazakhstan

Contact us

info@proplan.hr
www.proplan.hr